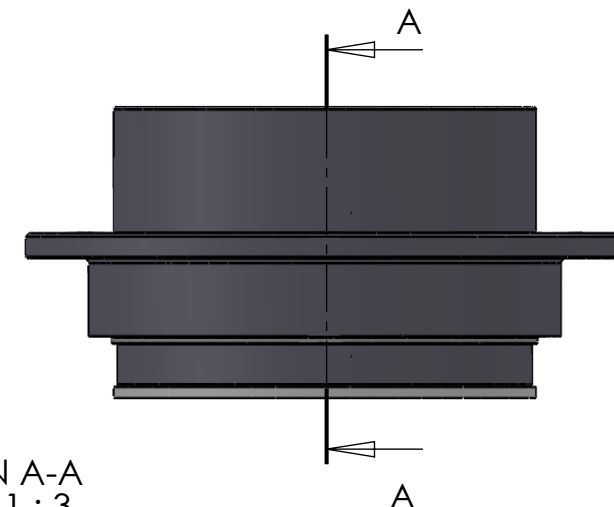



SECTION A-A
SCALE 1 : 3



| ITEM NO. | PART NUMBER | PART NAME | QTY. |
|----------|-------------|---|------|
| 1 | M33-120 | Outer house 4SF120-4SF139 | 1 |
| 2 | M11-109 | Ball 4SF120-4SF139 | 1 |
| 3 | OR160-25 | $\varnothing 160 \times 2.5\text{mm}$ | 2 |
| 4 | M03-285 | Delrin Lockring $\varnothing 148,5 \times \varnothing 131 \times 1,75\text{mm}$ | 2 |
| 5 | M05-302 | L-ring $\varnothing 125 \varnothing 128.5 \varnothing 145$ | 2 |
| 6 | M01-332 | Roller $\varnothing 10.0 \times 57\text{mm}$ | 42 |
| 7 | M35-117 | Inner house 4SF120-4SF129 | 1 |
| 8 | OR150-25 | $\varnothing 150 \times 2.5\text{mm}$ | 1 |
| 9 | M09-120 | Alu lockring $\varnothing 160.5 \times \varnothing 169.5$ | 1 |
| 10 | M07-215 | Washer $\varnothing 125.5 \varnothing 168$ | 1 |

| | | | | | | |
|---|-------------|-------------------------|-------------|---------------------|-------------|--|
| DWG NR / NAME: 4SF125 / S-A top roller bearing | | | | BATCH NR: | |  |
| PROJECT: Shaft $\varnothing 125\text{mm}$, max working load 7900kg | | | | REKV.NR / ORDRE NR: | | |
| DATE: 20-01-2011 | NAME: JR | SCALE / PAPER: 1:5 / A4 | MATERIAL: g | LOCATION: | ORDRE DATO: | JEFA MARINE A/S NIMBUSVEJ 2 2670 GREVE. DENMARK Tlf: +45 4615 5210 & Fax: +45 46155208 Email: info@jefa.com www.jefa.com |
| MODIFY DATE: | : / UPDATED | | WEIGHT: | REV: | LEV.DATO: | |