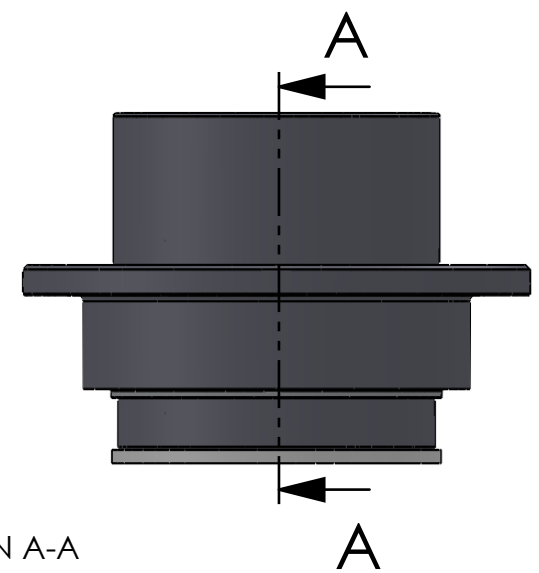



SECTION A-A
SCALE 1 : 2.5



ITEM NO.	PART NUMBER	PART NAME	QTY.
1	M33-105	Outer house 4SF060-4SF079	1
2	M11-103	Ball 4SF060-4SF079	1
3	OR100-25	ø100 x 2.5mm	2
4	M03-213	Delrin Lockring ø98,5 x ø81 x 1,75mm	2
5	M05-182	L-ring, delrin ø75 x ø95 x 7,5mm	2
6	M01-340	Roller ø10.5 x 57mm	25
7	M35-107	Inner house 4SF070-4SF079	1
8	OR90-25	ø90 x 2,5mm	1
9	M09-105	Alu lockring ø100,5 x ø109,5	1
10	M07-152	Washer, delrin ø75,5 x ø109 x 4,5mm	1

DWG NR / NAME: 4SF074 / S-A top roller bearing				BATCH NR:	
PROJECT: Shaft Ø74mm, max working load 4900kg				REKV.NR / ORDRE NR:	
DATE: 20-01-2011	NAME: JR	SCALE / PAPER: 1:10 / A4	MATERIAL: g	LOCATION:	ORDRE DATO:
MODIFY DATE:	: / UPDATED		WEIGHT:	REV:	LEV.DATO:



Jefa Rudder
SYSTEMS
JEFA MARINE A/S
NIMBUSVEJ 2
2670 GREVE. DENMARK
Tlf: +45 4615 5210 & Fax: +45 46155208
Email: info@jefa.com www.jefa.com