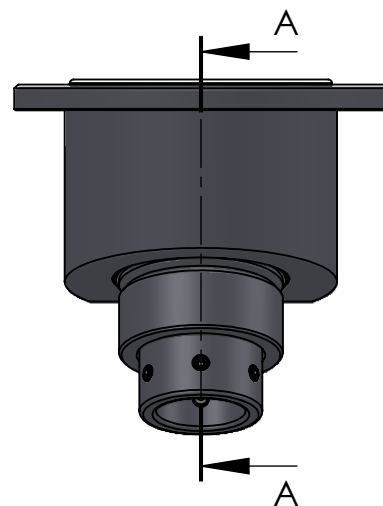


SECTION A-A



ITEM NO.	PART NUMBER	PART NAME	QTY.
1	M43-098	Cover with M98	1
2	M36-490	Outer house 4S035Z-20	1
3	M03-191	Delrin Lockring $\varnothing 59,5 \times \varnothing 46 \times 1,75\text{mm}$	1
4	M01-240	Roller $\varnothing 10.5 \times 44\text{mm}$	13
5	M41-501	Lockring $\varnothing 42 \times \varnothing 60 \times 4.5\text{mm}$	1
6	M05-101	L-ring $\varnothing 35 \times \varnothing 55$	2
7	Plastic hub	Palstic innerligner 20 x 1mm plate	1
8	M39-035	Hanger $\varnothing 35$	1
9	DIN0916-M06x10	Socket set screw with cup point M6x10mm	6
10	M37-094	Inner house 4S030Z 4S035Z 4S040Z	1
11	M11-095	Ball 4S030Z 4S035Z 4S040Z	1
12	M09-085	Alu lockring $\varnothing 60.8 \times \varnothing 68$	1
13	O-ring	$\varnothing 90 \times 2,5\text{mm}$	1
14	M41-510	5mm delrin ball	33

DWG NR / NAME:

4S035Z-20 / self-aligning rollerbearing

BATCH NR:

PROJECT:

Shaft $\varnothing 40\text{mm}$. 5-21° alignment, max working load 1500 kg

REKV.NR / ORDRE NR:

DATE:

24-08-2017

NAME:

TCH

SCALE / PAPER:

1:3 / A4

MATERIAL:

WEIGHT:

g

LOCATION:

REV:

ORDRE DATO:

LEV.DATO:

MODIFY DATE:

: /

Jefa Rudder
S Y S T E M S

JEFA MARINE A/S
NIMBUSVEJ 2
2670 GREVE, DENMARK

Tlf: +45 4615 5210 & Fax: +45 4615208
Email: info@jefa.com www.jefa.com