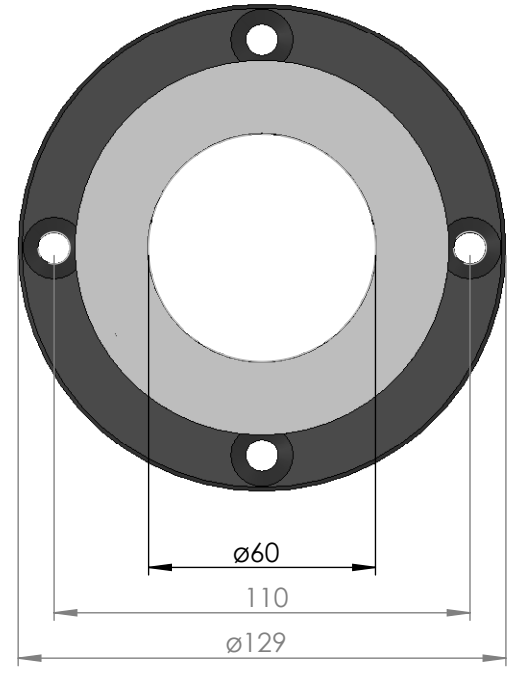
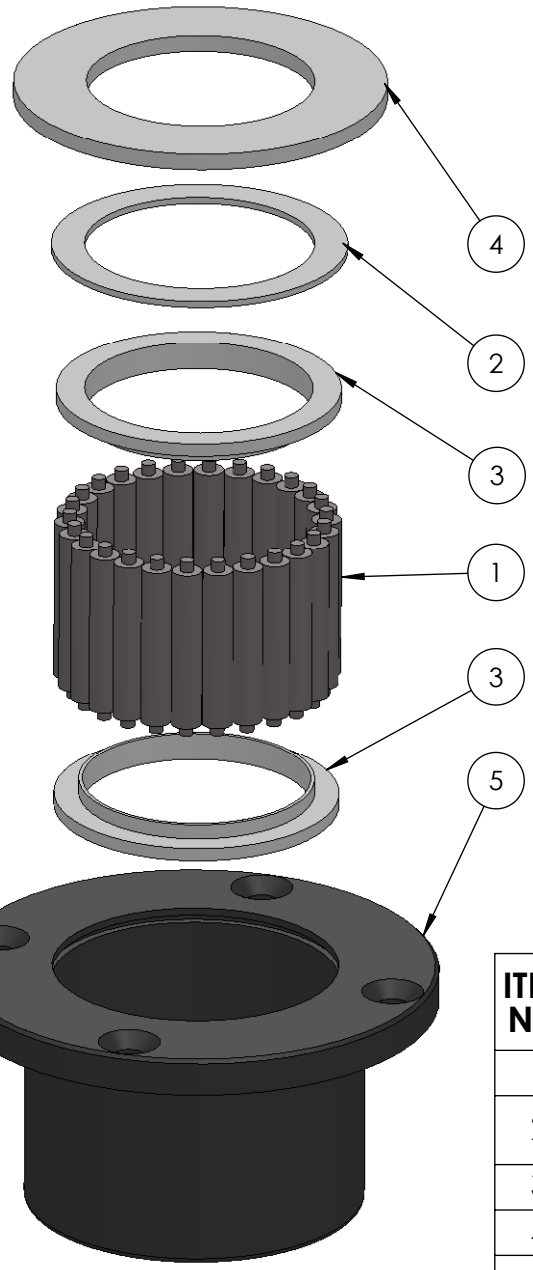
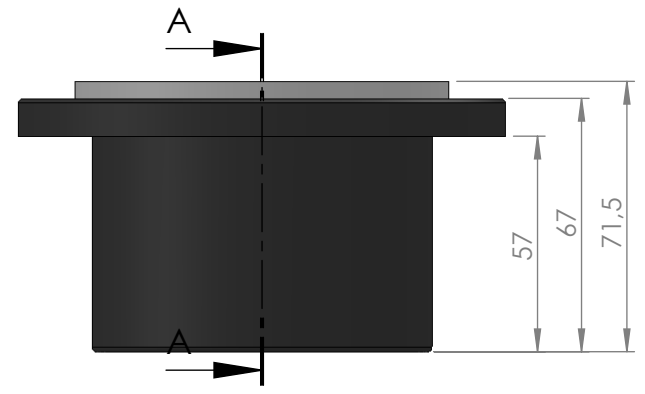


SECTION A-A



ITEM NO.	PART NUMBER	PART NAME	EXPL /QTY
1	M01-201	Roller ø8 x 44mm	26
2	M03-201	Delrin Lockring ø78,5 x ø61 x 1,75mm	1
3	M05-152	L-ring ø60 x ø62.5 ø76	2
4	M07-131	Washer ø60.5 x ø99	1
5	M23-125	Top roller bearing ø50-ø60	1

DWG NR / NAME:

42060 / Top roller bearing

BATCH NR:

PROJECT: Shaft ø60mm, Max working load 3000kg

REKV.NR / ORDRE NR:

DATE: 25-05-2009

NAME: JR

SCALE / PAPER: 1:2 / A4

MATERIAL: WEIGHT: g

LOCATION:

ORDRE DATO:

MODIFY DATE: : /

REV:

LEV.DATO:



JEFA MARINE A/S
 NIMBUSVEJ 2
 2670 GREVE, DENMARK

Tlf: +45 4615 5210 & Fax: +45 46155208
 Email: info@jefa.com www.jefa.com

A

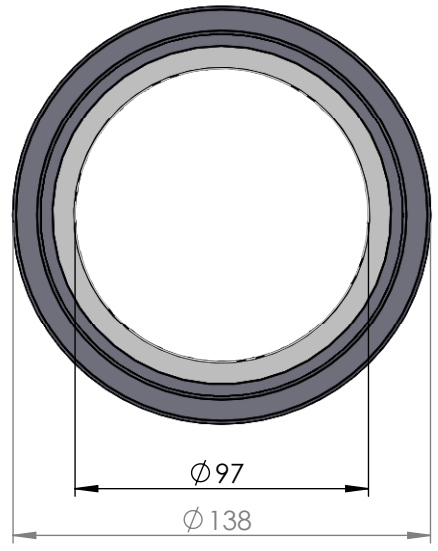
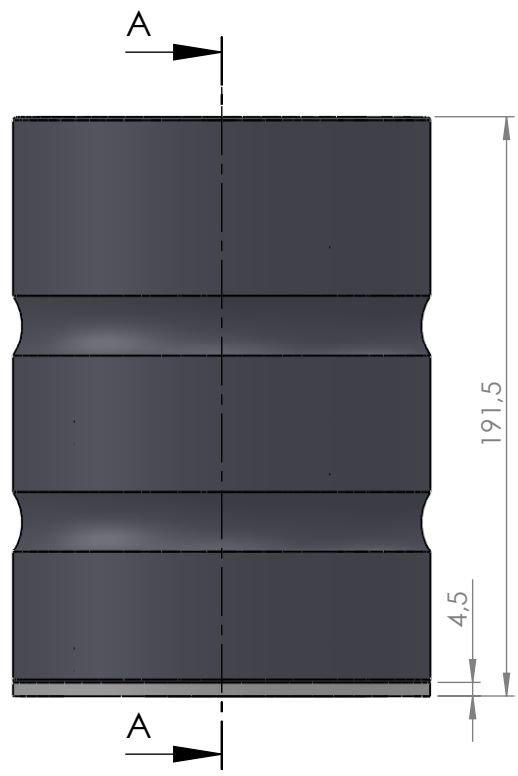
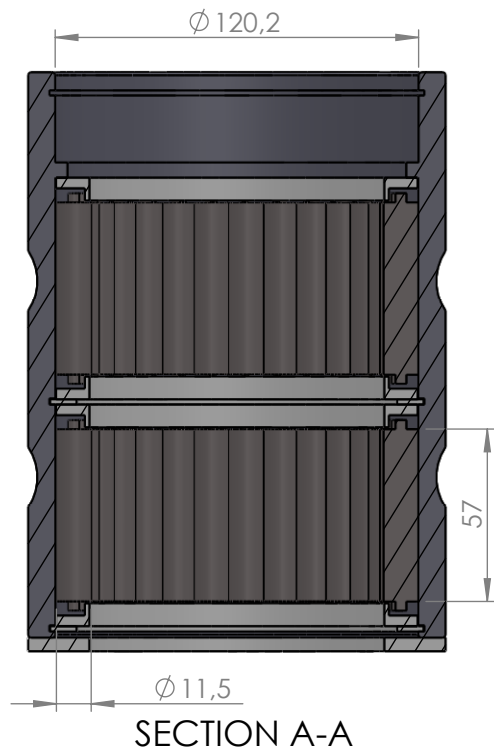
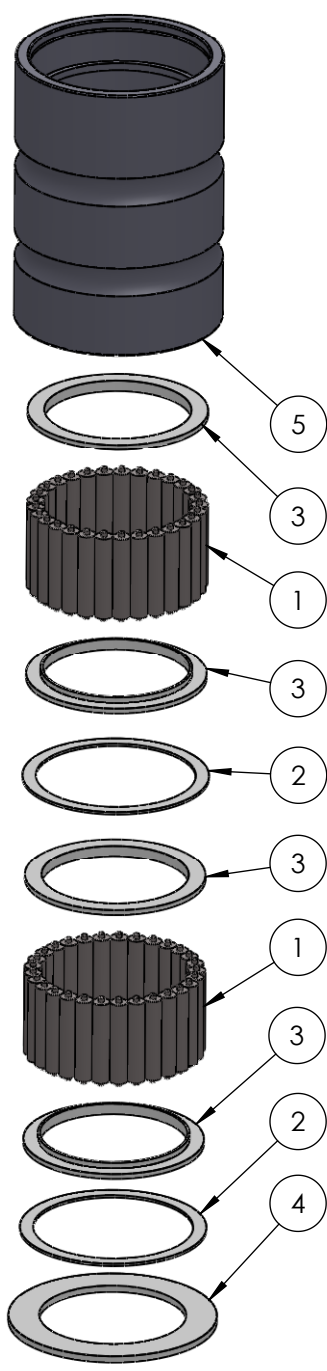
B

C

D

E

F



ITEM NO.	PART NUMBER	PART NAME	QTY.
1	M01-356	Roller $\phi 11.5 \times 57\text{mm}$	58
2	M03-232	Lockring $\phi 106 \phi 124$	2
3	M05-230	L-ring $\phi 97 \phi 100.5 \phi 120$	4
4	M07-182	Washer $\phi 97.5 \phi 138$	1
5	M21-111	Rollerbearing $\phi 80 - \phi 89\text{mm}$	1

DWG NR / NAME:

41097 / Lower roller bearing

BATCH NR:

PROJECT:
Shaft $\phi 97\text{mm}$, Max working load 12800kg

REKV.NR / ORDRE NR:

DATE:
23-06-2009
MODIFY DATE:

NAME:
JR

SCALE / PAPER:
1:2.5 / A4

MATERIAL:
WEIGHT: g

LOCATION:
REV:

ORDRE DATO:

LEV.DATO:

Jefa Rudder
SYSTEMS

JEFA MARINE A/S
NIMBUSVEJ 2
2670 GREVE. DENMARK

Tlf: +45 4615 5210 & Fax: +45 46155208
Email: info@jefa.com www.jefa.com

: /