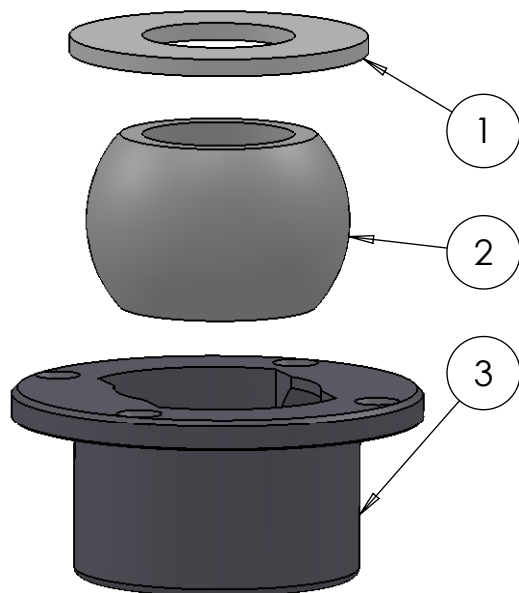


SECTION A-A
SCALE 1 : 1



ITEM NO.	PART NUMBER	PART NAME	Default/ QTY.
1	M07-107	Washer $\phi 40.5 \times \phi 79$	1
2	M13-112-40	Ball with rollers for 5T040	1
3	M51-085	House for 5T035-5T040	1

DWG NR / NAME: **5T040 / S-A top Roller bearing $\phi 40$ mm**

PROJECT:
Shaft $\phi 40$ mm, max working load 1000 kg

DATE:
08-12-2010

NAME:
JR

SCALE / PAPER:
1:2/ A4

MATERIAL:
WEIGHT: g

LOCATION:

REV:

BATCH NR:

REKV.NR / ORDRE NR:

ORDRE DATO:

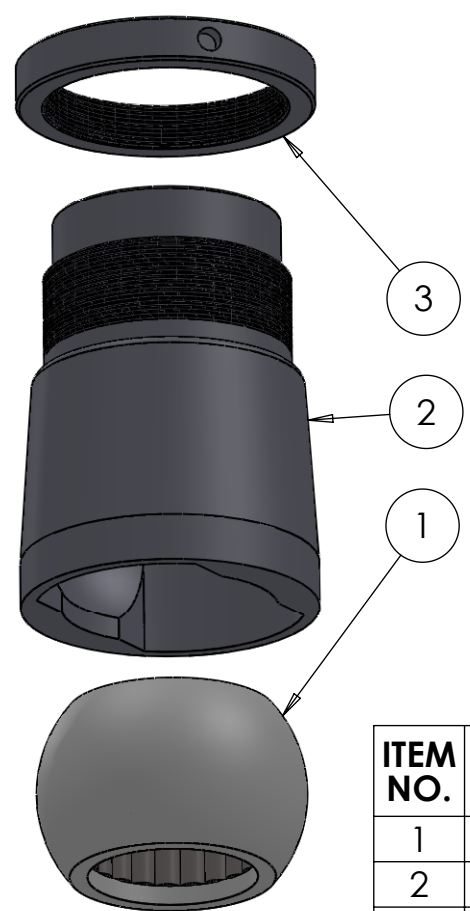
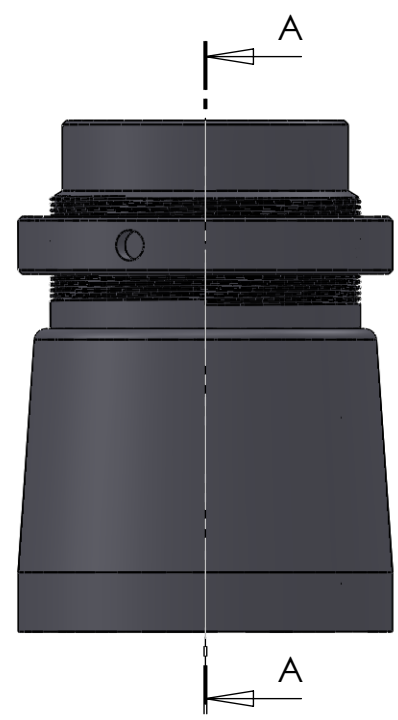
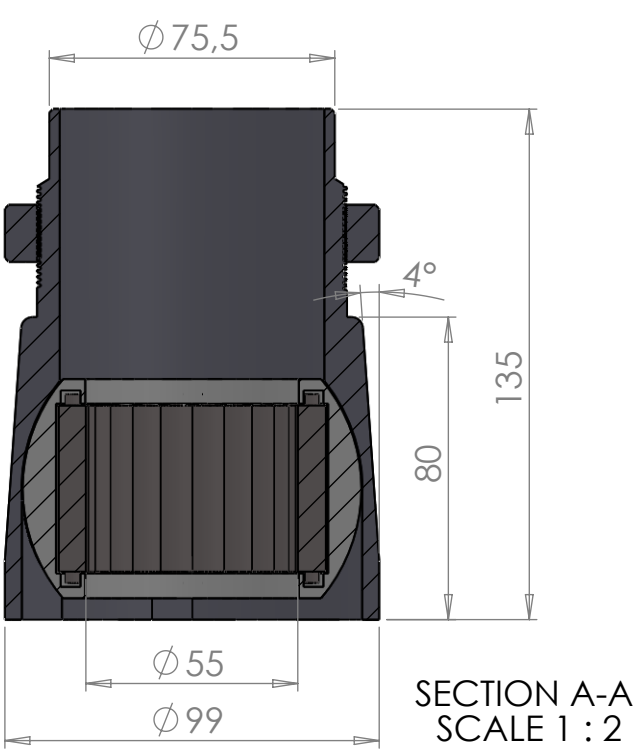
LEV.DATO:

Jefa Rudder
SYSTEMS

JEFA MARINE A/S
NIMBUSVEJ 2
2670 GREVE. DENMARK

Tlf: +45 4615 5210 & Fax: +45 46155208
Email: info@jefa.com www.jefa.com

: /



ITEM NO.	PART NUMBER	PART NAME	QTY.
1	M13-162-55	Ball with Rollers for 5BT055	1
2	M53-105	House for 5BT046-5BT060	1
3	M54-105	Nut M82x2	1

DWG NR / NAME: **5BT055 / Conical SA lower roller bearing**

PROJECT: For ø55mm shaft, max working load 1900 kg

DATE: 29.09.2011
 NAME: JR
 SCALE / PAPER: 1:2.5 / A4
 MATERIAL: g
 WEIGHT: g
 LOCATION:
 REV:

BATCH NR:
 REKV.NR / ORDRE NR:
 ORDRE DATO:
 LEV.DATO:

Jefa Rudder
 SYSTEMS
 JEFA MARINE A/S
 NIMBUSVEJ 2
 2670 GREVE, DENMARK
 Tlf: +45 4615 5210 & Fax: +45 46155208
 Email: info@jefa.com www.jefa.com

: /