

# BEARING CONVERSION

DEHLER 34 - 1990

“ARGALLÁN”

# BEARING CONVERSION

- COMPONENTS USED:
  - ONE 6T080 BEARING FOR THE BOTTOM.
  - ONE 70-80 SLEEVE FOR THE BOTTOM.
  - ONE 5T045 BEARING FOR THE TOP.
  - ONE 40-45 SLEEVE FOR THE TOP.
  - AUXILIARY ELEMENTS (GRP, MASTER PIECE FOR ALIGNMENT, SPECIAL TOOL FOR CUT...).

# RUDDER STOCK

## Initial state



# RUDDER STOCK

## Removing the old sleeves





# RUDDER STOCK

The shaft clean and ready to install the news sleeves.



# RUDDER STOCK

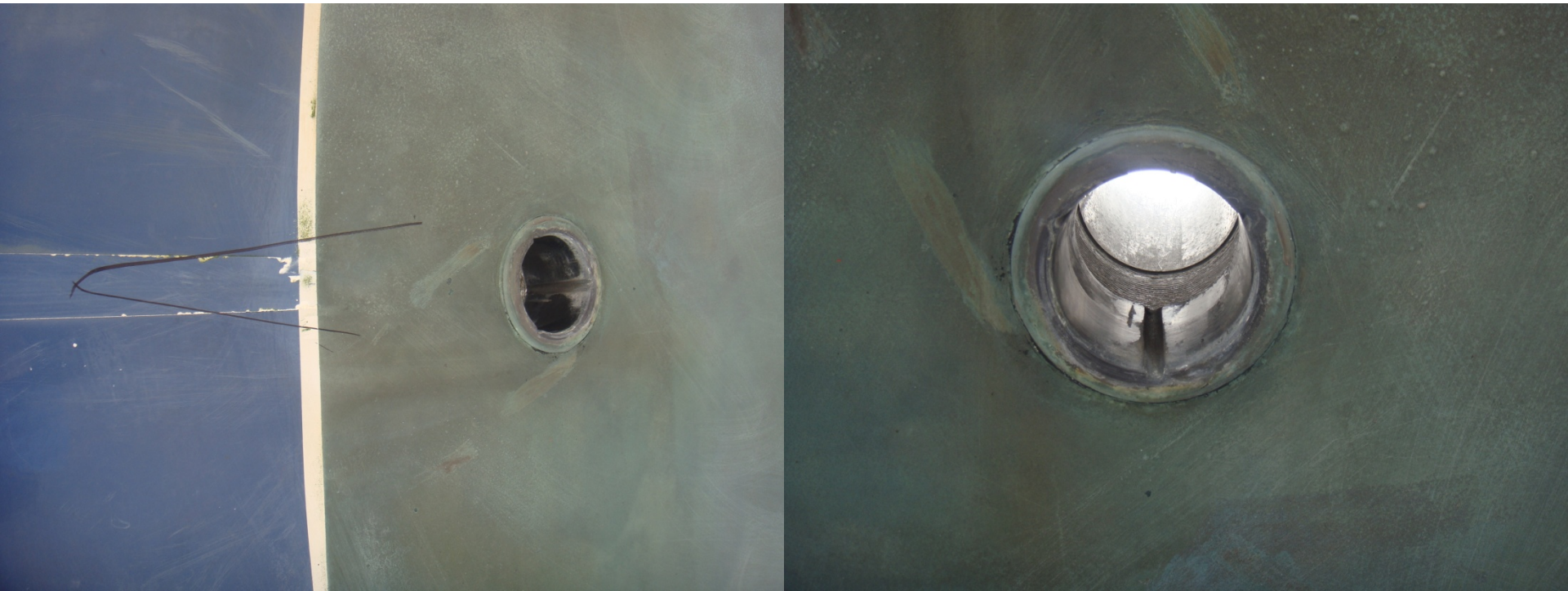
The shaft finished and with the new sleeves.





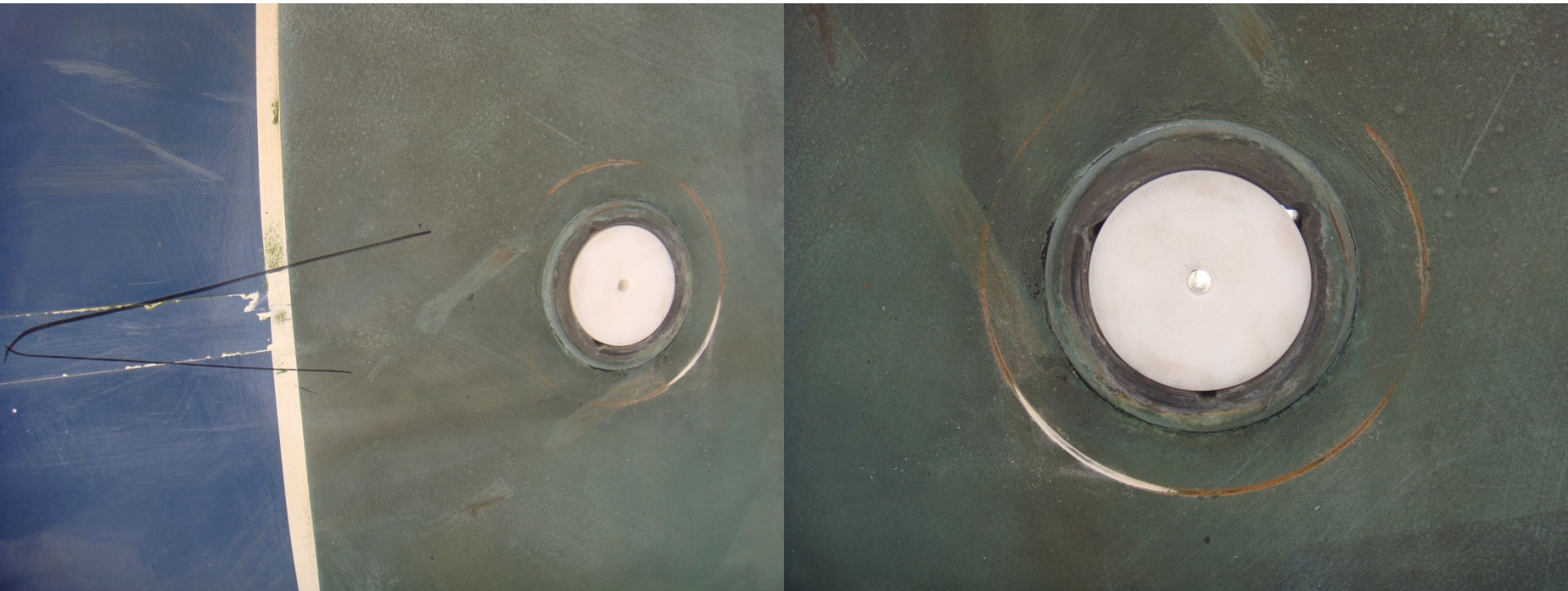
# THE BEARING

The initial state.



# THE BEARING

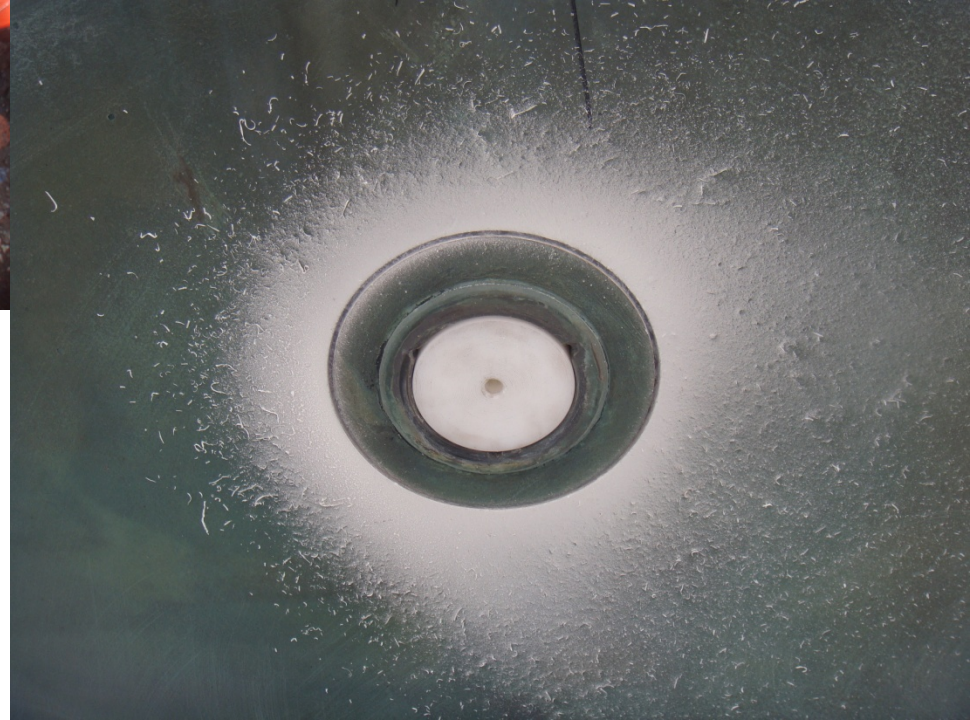
Special piece to make a perfect alignement.





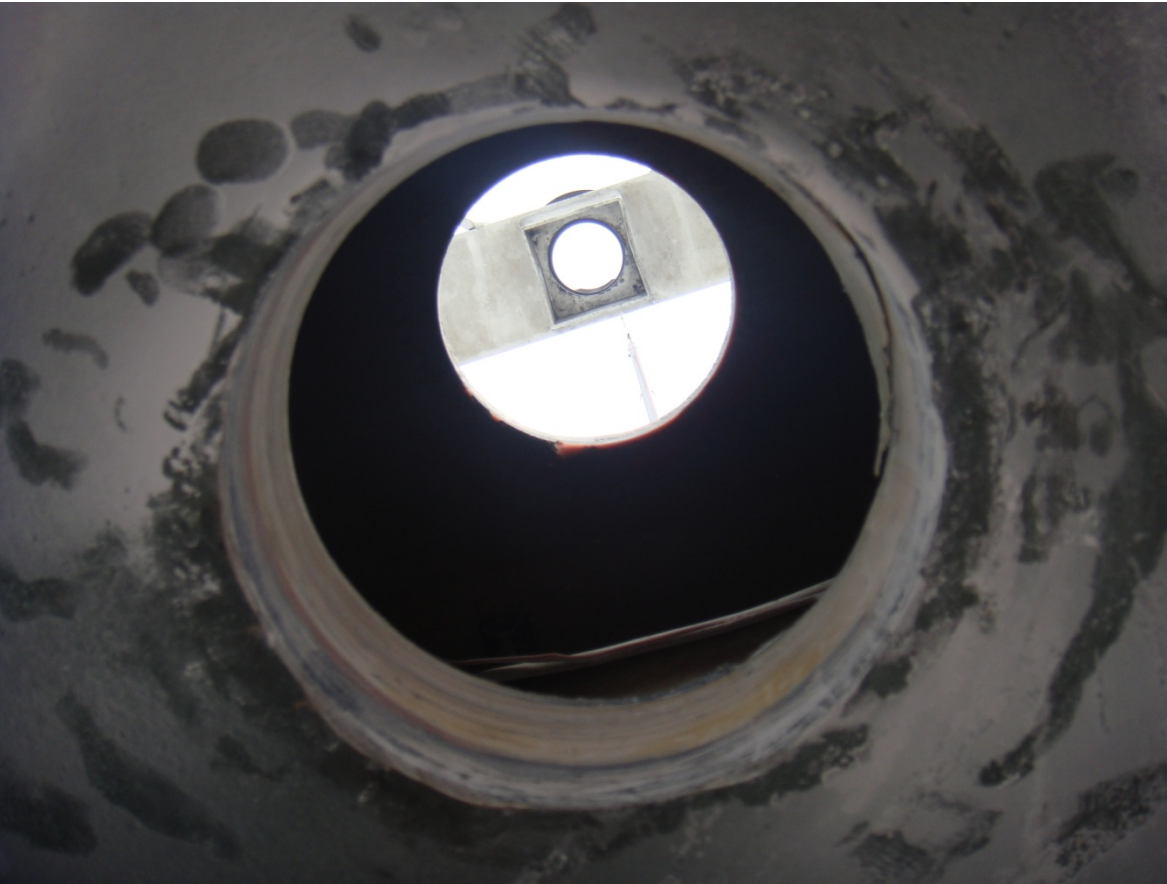
# THE BEARING

The tool to make the cut



# THE BEARING

## THE HOLES.





# THE BEARING

The new GRP-PET self aligning bottom roller bearing glassed into the hull.





# THE WORK FINISHED

## Ready to the water



# Comments from the owner:

- Hi Armin,
- 
- Excuse me for the delay to tell you the results of the work.
- I only have one word... ¡¡¡AWESOME...!!!
- You can tell to the people than have the same boat than me that they don't now the boat that they have until they don't change the bearings.
- The change in the maneuverability of the boat was spectacular...
- I only can tell you thank you very much.
- I send you attachment one "pdf" with the work that I made. Plus I send you all the photographs of the change.
- You can put this in the web page or use how you like.
- 
- Probably we continuous with our conversations because I have a little fissure in the blade and I am thinking in the change for a RUD33R.
- 
- Best regards from A Coruña in Spain.
- 
- Domingo Plana.